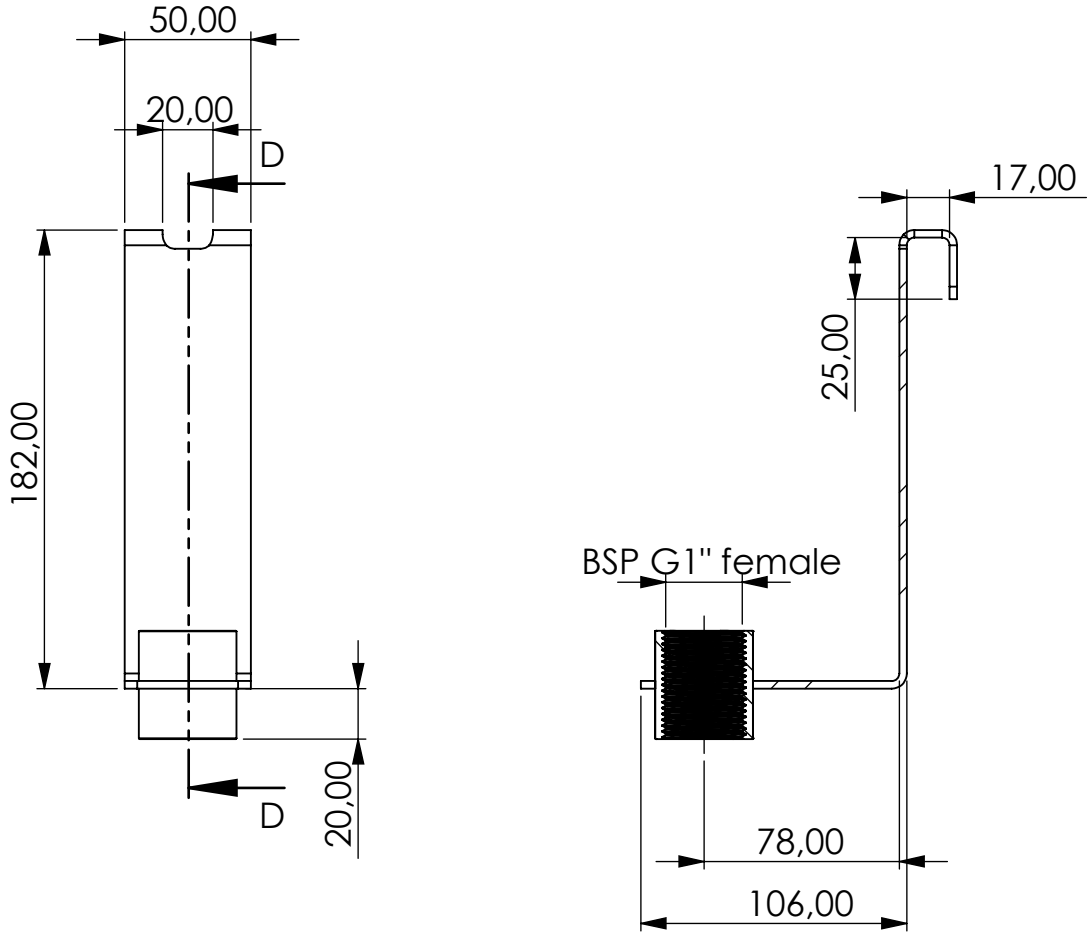
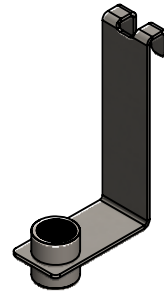


# Wall mount



|              |            |   |           |   |                         |   |                          |   |  |
|--------------|------------|---|-----------|---|-------------------------|---|--------------------------|---|--|
| Product Code | <b>WH</b>  | - | <b>HK</b> | - | <b>2-3</b>              | - | <b>SS</b>                | - | <b>G1i</b>                             |
|              | Wall mount |   | With hook |   | For adsorber series 2&3 |   | Material stainless steel |   | Connection for Adsorber BSP G1" female |

Total weight (kg): 0.47

NAME:

**Wall mount**

**WH-HK\_2-3\_SS\_G1i**

Article no.:

**03.0000.89**

Status approved

Format A4

Ratio 1:3

Sheet / of 1 / 1

|      |            |              |
|------|------------|--------------|
|      | Date       | Name         |
| rev. | 05.09.2021 | Daniel Zinic |

GIEBEL FilTec GmbH  
[www.giebel-adsorber.de](http://www.giebel-adsorber.de)  
[info@giebel-adsorber.de](mailto:info@giebel-adsorber.de)



**GIEBEL Adsorber®**  
 ...setting standards in aeration drying!