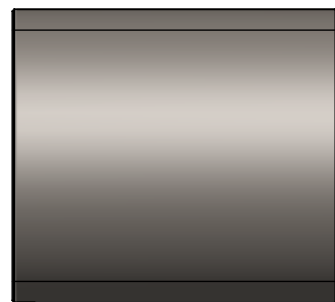
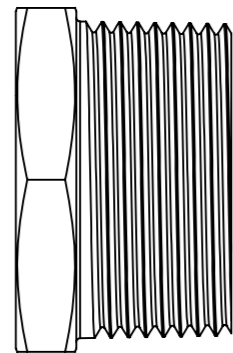


Adapter AA (male-male)



Adapter II (female-female)



Adapter IA (female-male)

Adsorber	Article no. Artikel Nr.	Code / Typenschlüssel	Material	Seal Dichtung	A	B
Adapter AA (male-male)	03.2157.04	AD-AA_AL_N_G38a_M22x1,5a	Aluminium	NBR	BSP G3/8" m.	M22x1,5 m.
	03.2164.33	AD-AA_AL_N_R38a_R38a	Aluminium	-	BSP R3/8" m.	BSP R3/8" m.
	03.2164.40	AD-AA_AL_N_R38a_R14a	Aluminium	-	BSP R3/8" m.	BSP R1/4" m.
	03.2164.41	AD-AA_AL_N_R38a_R12a	Aluminium	-	BSP R3/8" m.	BSP R1/2" m.
	03.2164.42	AD-AA_AL_N_R38a_R34a	Aluminium	-	BSP R3/8" m.	BSP R3/4" m.
	03.2164.43	AD-AA_AL_N_R38a_R1a	Aluminium	-	BSP R3/8" m.	BSP R1" m.
	03.2123.03	AD-AA_AL_N_G34a_N1a	Aluminium	NBR	BSP G3/4" m.	BSP N1" m.
	03.2154.02	AD-AA_AL_N_G34a_M22x1,5a	Aluminium	NBR	BSP G3/4" m.	M22x1,5 m.
	03.2154.03	AD-AA_AL_N_G34a_M33x1,5a	Aluminium	NBR	BSP G3/4" m.	M33x1,5 m.
	03.2164.36	AD-AA_SS_R34a_R34a	Stainless steel	-	BSP R3/4" m.	BSP R3/4" m.
	03.2164.37	AD-AA_SS_R34a_R1a	Stainless steel	-	BSP R3/4" m.	BSP R1" m.
	03.2164.34	AD-AA_SS_R34a_R12a	Stainless steel	-	BSP R3/4" m.	BSP R1/2" m.
	03.2164.44	AD-AA_SS_R34a_R114a	Stainless steel	-	BSP R3/4" m.	BSP R1 1/4" m.
	03.2164.45	AD-AA_SS_R34a_R112a	Stainless steel	-	BSP R3/4" m.	BSP R1 1/2" m.
	03.2120.02	AD-AA_AL_N_G1a_N1a	Aluminium	NBR	BSP G1" m.	BSP N1" m.
	03.2164.38	AD-AA_SS_R1a_R1a	Stainless steel	-	BSP R1" m.	BSP R1" m.
03.2164.46	AD-AA_SS_R1a_R114a	Stainless steel	-	BSP R1" m.	BSP R1 1/4" m.	
03.2164.47	AD-AA_SS_R1a_R112a	Stainless steel	-	BSP R1" m.	BSP R1 1/2" m.	
03.2164.48	AD-AA_SS_R1a_R2a	Stainless steel	-	BSP R1" m.	BSP R2" m.	
Adapter II (female-female)	08.2167.10	AD-II_SS_G1i_G1i	Stainless steel	-	BSP G1" f.	BSP G1" f.
	08.2124.21	AD-II_SS_R1i_R114i	Stainless steel	-	BSP R1" f.	BSP R1 1/4" f.
	08.2150.05	AD-II_SS_R1i_R112i	Stainless steel	-	BSP R1" f.	BSP R1 1/2" f.
	08.2150.10	AD-II_SS_G1i_M40x1,5i	Stainless steel	-	BSP G1" f.	M40x1,5 f.
	08.2150.06	AD-II_SS_R1i_R2i	Stainless steel	-	BSP R1" f.	BSP R2" f.
Adapter IA (female-male)	03.2196.06	AD-IA_MS_G34i_G1a	Brass	-	BSP G3/4" f.	BSP G1" m.
	03.2196.07	AD-IA_MS_G1i_G34a	Brass	-	BSP G1" f.	BSP G3/4" m.
	03.2206.03	AD-IA_AL_N_G1i_S1a	Aluminium	NBR	BSP G1" f.	S 1" m
	03.2164.39	AD-IA_SS_R1i_R114a	Stainless steel	-	BSP R1" f.	BSP R1 1/4" m.
	07.2122.00	AD-IA_SS_R1i_R112a	Stainless steel	-	BSP R1" f.	BSP R1 1/2" m.
	07.2122.01	AD-IA_SS_R1i_R2a	Stainless steel	-	BSP R1" f.	BSP R2" m.
	07.2106.00	AD-IA_PP_G1i_G2a	Polypropylene	-	BSP G1" f.	BSP G2" m.
	07.2122.02	AD-IA_St_R1i_R2a	Galvanized steel	-	BSP R1" f.	BSP R2" m.
	07.2106.01	AD-IA_PP_G34i_G2a	Polypropylene	-	BSP G3/4" f.	BSP G2" m.
	07.2160.00	AD-IA_PE_G34i_S56x4a	Polyethylene	-	BSP G3/4" f.	S56x4 m.
07.2162.00	AD-IA_PE_G34i_S70x6a	Polyethylene	-	BSP G3/4" f.	S70x5 m.	

 GIEBEL FilTec GmbH <small>GIEBEL Adsorber setting standards in aeration drying</small>		Allge- mein- toleranzen DIN ISO 2768-mK	 DIN 6 T1 - Proj.methode 1	Rohabmessung: Material: Gewicht (kg):
Datum Name		Erstellt 21.01.2017 Gepr. Heinrich Laas Freig. 17.06.2019 Daniel Zinic	Benennung: Accessories Adapter / Anschlüsse	Artikelnummer: Status freigegeben Maßstab 1:1 Format A3 Blatt / von 1 / 1
Rev Änderung Datum Name	Schutzvermerk ISO 16016 beachten	Identnummer:		